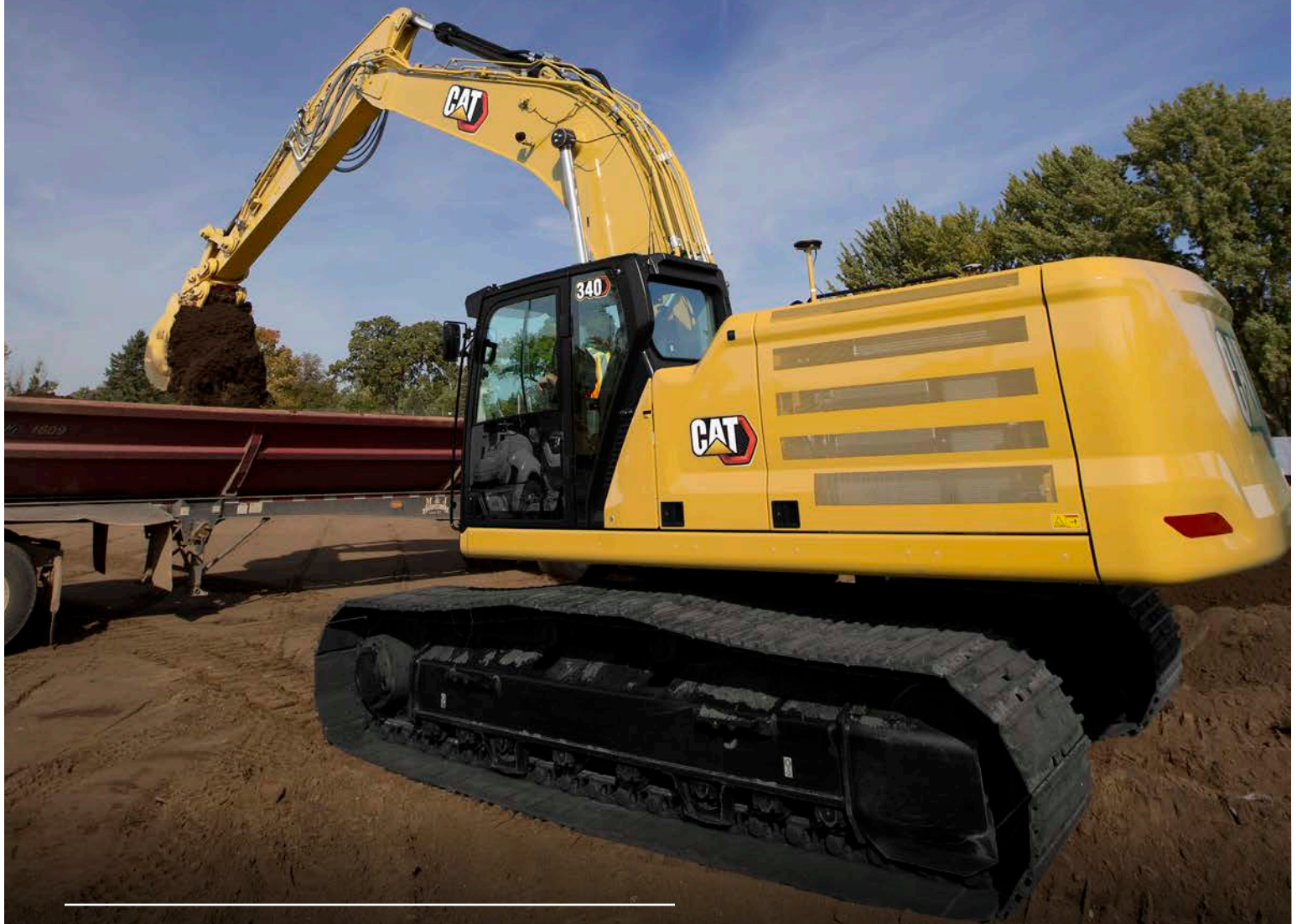


340

HYDRAULIC EXCAVATOR



Engine Power
Operating Weight*

259 kW (347 hp)
36 800 kg (81,200 lb)

*Long Wide Undercarriage, HD Reach Boom, HD R3.2DB (10'6") Stick, HD 2.36 m³ (3.08 yd³) Bucket, 600 mm (24") Triple Grouser Shoes, 7.56 mt (16,700 lb) Counterweight



NEXT GENERATION EXCAVATORS

Cat® next generation excavators offer you more value than ever.

- + MORE PRODUCTION
- + LOWER OWNING AND OPERATING COSTS
- + HIGH DURABILITY

If you're ready to take your business to the next level, put Cat next generation excavators to work for you.



THE CAT® 340

BEST-IN-CLASS PRODUCTION

With up to 10% more productivity than the model* it replaces, the Cat 340 is the best in its class for moving tons per hour. Add in Caterpillar's rock-solid reputation for reliability and durability along with the 340's low owning and operating costs and you can expect this excavator to help you profit like nobody's business.

*2020 model year 336

UP TO 10% MORE PRODUCTION⁽¹⁾

With 10% more engine power, a wider undercarriage, and heavier counterweight, the Cat 340 can use bigger tools to deliver the highest level of production in its size class.

LOW OWNING AND OPERATING COSTS

Fuel efficiency leadership comes from our smart electrohydraulic system. Longer life fuel, oil, and air filters contribute to lower maintenance costs and decreased downtime.

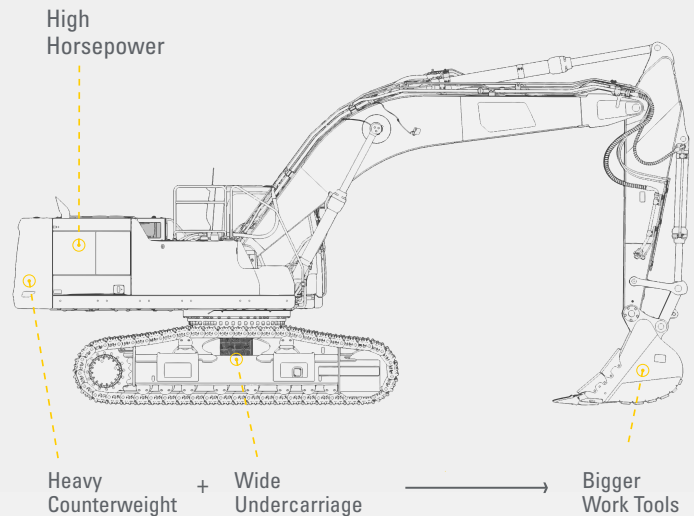
EASY-TO-USE CAT TECHNOLOGY

Cat Grade and Payload enhance your speed, accuracy, and overall operating efficiency. Cat E-Fence improves jobsite safety for you, your team, and others.

⁽¹⁾ Compared to 2020 model year 336



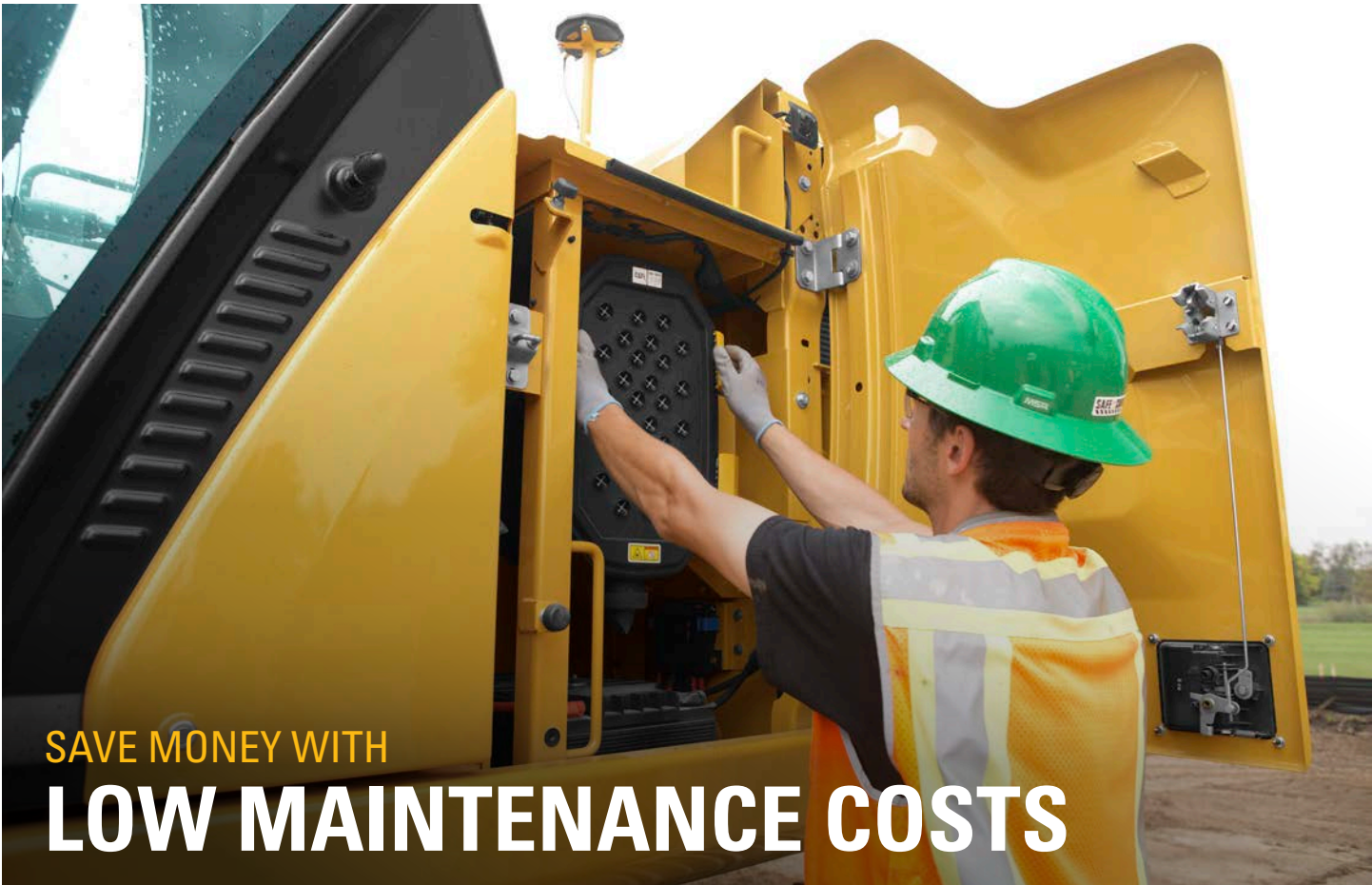
GET MORE WORK DONE NEXT GENERATION CAT® 340 EXCAVATOR



10% MORE PRODUCTIVITY*

* COMPARED TO COMPETITIVE 2020 MODEL YEAR 36 METRIC TON EXCAVATORS





SAVE MONEY WITH
LOW MAINTENANCE COSTS

Extended service intervals and industry-leading fuel efficiency mean you'll spend more time working and less time and money on maintenance.

KEY MAINTENANCE COST ADVANTAGES

- + Oil and fuel filters with synchronized 1,000 hour maintenance intervals
- + Consolidated filter locations and grease points to reduce service time
- + Hydraulic filter with high dirt holding capacity
- + Advanced Cat air filter with high dust holding capacity

BOOST PRODUCTIVITY WITH PROACTIVE SERVICE REMINDERS

Our new integrated vehicle health management system alerts you with step-by-step service guidance along with parts needed so you don't experience any unnecessary downtime.



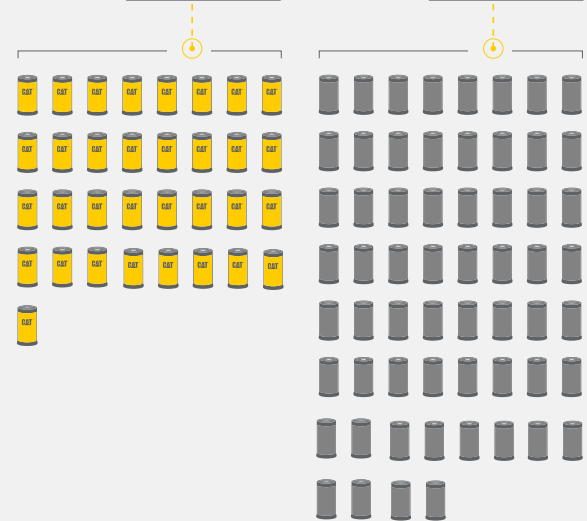
EXTEND SERVICE. SAVE MONEY.

33

Engine oil and fuel filters replaced on Cat 30-40 ton excavators

60

Engine oil and fuel filters replaced on many competitive 30-40 ton excavators



*COMPARED TO MANY COMPETITIVE 30-40 TON EXCAVATORS WITH 500 HOUR ENGINE OIL AND FUEL FILTER MAINTENANCE INTERVALS OVER 10,000 HOURS.

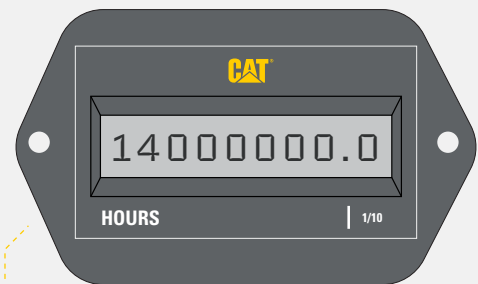


QUALITY, RELIABILITY, AND DURABILITY COME STANDARD

You can trust Caterpillar's time-proven engineering and manufacturing know-how for top-notch quality, reliability, and durability. In addition to a powerful engine with millions of hours of service and reinforced booms and sticks for taking on hard, heavy work, a huge difference in overall Cat machine durability is the undercarriage. It is the link between the ground and upper body, and it absorbs many of the stresses between them. That's why we put so much effort into making ours better than competitors. In fact, the 340 comes with many standard heavy-duty reinforcements.

- + HEAVY-DUTY TRACK LINK WITH GREASE-SEALED PINS
- + HEAVY-DUTY RECOIL SPRINGS
- + HEAVY-DUTY FINAL DRIVES
- + HEAVY-DUTY TRAVEL MOTOR GUARDS
- + HEAVY-DUTY BOTTOM GUARD
- + HEAVY-DUTY SWING FRAME
- + HEAVY-DUTY SWING BEARING

DURABLE CAT C9.3B ENGINE GREAT RELIABILITY AND UPTIME

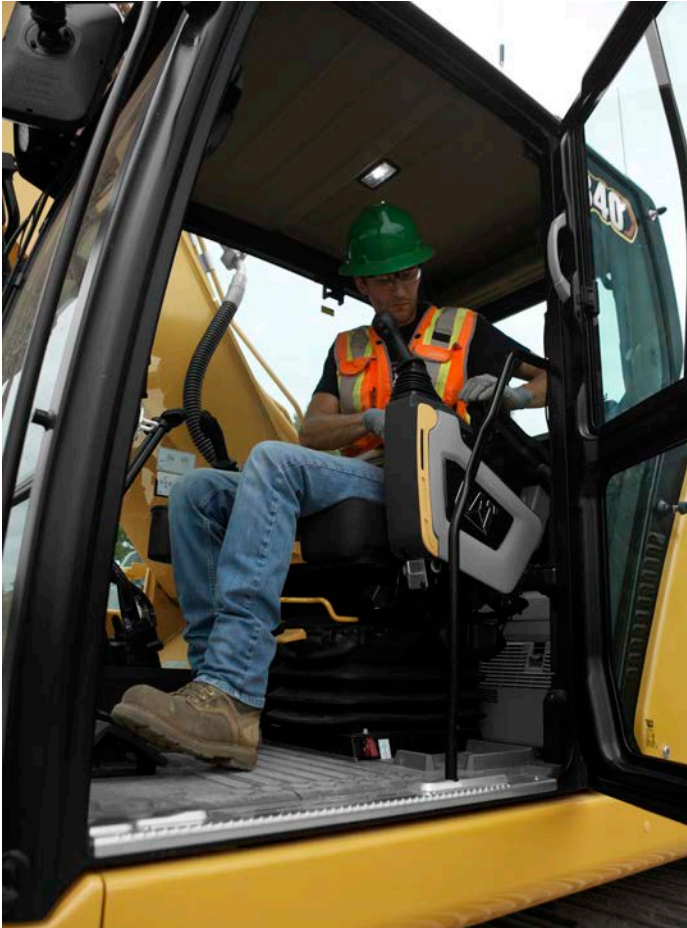


OVER **14 MILLION HOURS***
OF SERVICE AND COUNTING

*TOTAL INCLUDES ALL CURRENT 36 METRIC TON EXCAVATORS WITH C9.3B ENGINES

CAB MAKES WORK

MORE COMFORTABLE



Sites where excavators work are typically rugged and challenging. That's why it's important the 340 cab keeps the operator comfortable and protected from fatigue, stress, sound, and outside temperatures.

SEAT AND CONTROLS

Standard air-suspension seat, automatic climate control, and easy-to-reach joysticks and control panel help you stay comfortable and productive all shift long. See standard and optional equipment for more cab details.

CAT STICK STEER

This option lets you simply push a button and use one hand to travel and turn instead of both hands or feet on levers and pedals. Available with deluxe cab only.

CONNECTIVITY AND STORAGE

Convenience features include a Bluetooth® radio, USB and auxiliary ports for connecting and charging devices, and storage space for drinks, lunch boxes, and other essential items.



TOUCHSCREEN MONITOR

Control most machine settings through the high-resolution touchscreen monitor. It offers multiple languages and is easy to reach from the seat with no twisting or turning required.

SMART SETTINGS

Smart mode automatically adjusts engine and hydraulic power to meet work demand with maximum fuel efficiency – less power for tasks like fine grading and more power for heavy digging and truck loading. Operators can set and store power mode preference using operator ID; owners can lock in the mode they want their operators to use to help manage fuel consumption.

CUSTOMIZABLE JOYSTICKS

Customize joystick functions through the monitor. Joystick pattern as well as response can be set to match your preferences, and operator ID will remember and restore them at login. Adding an auxiliary relay allows you to power on or turn off a CB radio, beacon light, and even a dust suppression watering system without taking your hands off the joysticks.

KEYLESS PUSH START

Keyless push-button engine start adds security by using operator ID codes to limit and track machine access. Enter codes manually or bypass using an optional Bluetooth key fob.



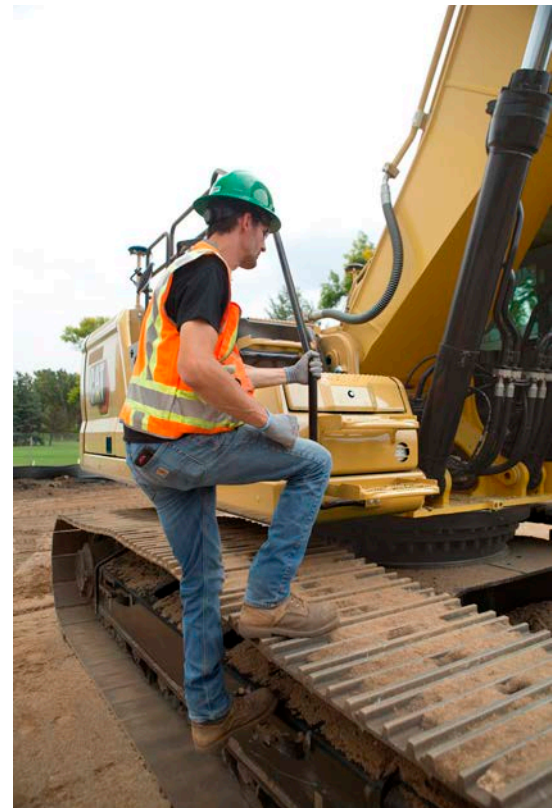
SAFETY FEATURES

STAND OUT

THE 340 IS DESIGNED WITH YOUR SAFETY IN MIND.

KEY SAFETY ADVANTAGES

- + Cat Detect - People Detection uses smart cameras with depth sensors to provide the operator with visual and auditory alerts so he or she can take immediate action when a person is too close to the excavator.
- + Handrails, serrated steps, and anti-skid plating help prevent slips and trips.
- + In addition to a travel alarm, an available swing alarm alerts people when the excavator rotates.
- + Narrow cab pillars, large windows, and a flat engine hood design enhance visibility; a standard rearview camera enhances visibility even more.
- + A travel direction indicator helps the operator know which way to activate the levers before moving.
- + Optional inspection lighting illuminates the engine, pump, battery, and cooling compartments.

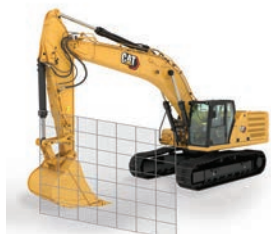




PROTECTS YOU
AND OTHERS



E-WALL SWING



E-WALL FORWARD



E-WALL CAB PROTECTION



E-WALL CEILING



E-WALL FLOOR

E-FENCE TECHNOLOGY

Whether you are using a bucket and thumb combination or a hammer, grapple, or clamshell, E-Fence automatically stops excavator motion using boundaries you set in the monitor for the entire working envelope – above, below, sides, and front. E-Fence protects equipment from damage and reduces fines related to zoning or underground utility damage. Automatic boundaries even help prevent operator fatigue by reducing overswinging and digging.

MAKE WORK LIFE EASIER

Cat Equipment Management helps take the complexity out of managing your equipment and jobsites by gathering data and serving it to you in customizable formats.

PRODUCT LINK™

Product Link™ collects data automatically from your assets. View information such as location, hours, fuel usage, idle time, maintenance alerts, diagnostic codes, and machine health online through web and mobile applications.

VISIONLINK®

Access information anytime, anywhere with VisionLink®. Use it to make informed decisions that boost productivity, lower costs, simplify maintenance, and improve safety and security on your jobsite. With different subscription level options, your Cat dealer can help you configure exactly what you need to connect your fleet and manage your business without paying for extras you don't want. Subscriptions are available with cellular or satellite reporting (or both).

Remote Services* is a suite of technologies that improve your jobsite efficiency.

Remote troubleshoot allows your Cat dealer to perform diagnostic testing on your connected machine remotely, pinpointing potential issues while the machine is in operation. Remote troubleshoot ensures the technician arrives with the correct parts and tools the first time, eliminating additional trips to save you time and money.

Remote flash updates onboard software without a technician being present, potentially reducing update time by as much as 50%. You can initiate the update when convenient, increasing your overall operating efficiency.

*Must be within cell range coverage.



GET JOBS DONE

FASTER AND BETTER



CAT GRADE WITH 2D

Set your targets in the monitor and cut and fill to specifications without needing a grade checker. Program up to four depth and slope offsets to get to grade even more quickly – a real time saver on the jobsite.



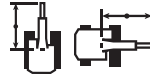
CAT GRADE WITH ASSIST

Automated boom, stick, and bucket movements deliver more accurate cuts with less effort. Simply set the depth and slope targets in the monitor and activate single-lever digging.



CAT PAYLOAD

Cat Payload helps you achieve precise load targets to improve your operating efficiency. Pick up a load of material – with a bucket and thumb combination or grapple and clamshell attachments – and get a real-time weight estimate without swinging. Automated tracking helps manage production and lower cost. The monitor's USB port lets you download results from one shift all the way up to 30 days of work so you can manage progress without needing an internet connection or VisionLink subscription.



CAT LIFT ASSIST

Lift Assist quickly calculates the actual load being lifted and compares it to the rated load the excavator is capable of handling. Visual and auditory alerts tell you if you are within safe working range or need to take action to avoid tipping.



AUTO DIG BOOST

Trouble cutting through tough material? Optional auto dig boost gives you an automatic power increase of 8% when you need it for better bucket penetration, shorter cycle times, and greater payloads.



AUTO HEAVY LIFT

Need more lift during your shift? Optional auto heavy lift gives you 8% more power exactly when you need it for as long as you need it.

AVAILABLE UPGRADES

Cat Grade with Advanced 2D and Cat Grade with 3D increase productivity and your profit potential. Cat Grade with Advanced 2D offers in-field design capability through an additional high-resolution touchscreen monitor. Cat Grade with 3D offers a choice of a single antenna global navigation satellite system (GNSS) for enhanced guidance or dual antenna GNSS for maximum grading efficiency.

All Cat Grade systems are compatible with radios and base stations from Trimble, Topcon, and Leica. Already invested in a grade infrastructure? You can install grade systems from Trimble, Topcon, and Leica onto the machine.

INCREASE YOUR PRODUCTIVITY AND PROFIT

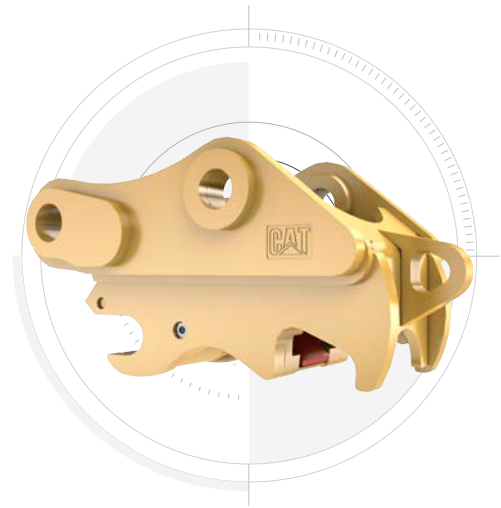
Expand the performance of your excavator with a variety of Cat attachments. Each is designed to maximize the machine's capability of moving material quickly and efficiently.

BUCKETS



Cat buckets and teeth can cut through the toughest material.

COUPLERS



Cat quick couplers let you change between tools in minutes, making the machine much more versatile.

HAMMERS AND MORE



Whether it's breaking rock, cutting steel, or grabbing and loading material, Cat hydromechanical attachments can help you do more work to make more money.

AUTO HAMMER STOP PREVENTS WEAR AND TEAR

Turn on through the monitor and your hammer will automatically stop after 30 seconds of continuous firing. This prevents the tool and excavator from overworking, enhancing the service life of both.



WE OFFER
MORE THAN MACHINES

When you buy Cat equipment, you're getting so much more than the machine. You're also getting the support of a best-in-class dealer network backed by a range of flexible solutions, technology, tools, and more. It's all about support that's built around your success.

- + Customer value agreements (CVAs)
- + Cost-saving service, repair, and rebuild options
- + Quality parts and precision components
- + Financing solutions
- + Rental and used equipment

Don't delay. Start your journey with Cat brand today. It will be one of the best decisions you'll ever make.

TECHNICAL SPECIFICATIONS

See cat.com for complete specifications.

ENGINE			
Engine Model	C9.3B		
Net Power – ISO 9249:2007	258 kW	346 hp	
Engine Power – ISO 14396:2002	259 kW	347 hp	
Bore	115 mm	5 in	
Stroke	149 mm	6 in	
Displacement	9.3 L	568 in ³	
Emits equivalent to U.S. EPA Tier 3 and EU Stage IIIA. Rating at 1,900 rpm.			

HYDRAULIC SYSTEM			
Main System – Maximum Flow (Implement)	560 L/min (280 × 2 pumps)	148 gal/min (74 × 2 pumps)	
Maximum Pressure – Equipment – Implement	35 000 kPa	5,076 psi	
Maximum Pressure – Equipment – Lift Mode	38 000 kPa	5,511 psi	
Maximum Pressure – Travel	35 000 kPa	5,076 psi	
Maximum Pressure – Swing	29 400 kPa	4,264 psi	

SWING MECHANISM			
Swing Speed	8.84 rpm		
Maximum Swing Torque	143 kN·m	105,214 lbf·ft	

DRIVE			
Maximum Travel Speed	4.7 km/h	2.9 mph	
Maximum Drawbar Pull	301.5 kN	67,780 lbf	

WEIGHTS			
Operating Weight	37 100 kg	81,900 lb	
Long wide undercarriage, Reach boom, HD R3.2DB (10'6") stick, HD 2.36 m ³ (3.08 yd ³) bucket, 600 mm (24") triple grouser shoes, 7.56 mt (16,700 lb) counterweight.			

SERVICE REFILL CAPACITIES			
Fuel Tank Capacity	600 L	158.5 gal	
Cooling System	40 L	10.5 gal	
Engine Oil (with filter)	32 L	8.5 gal	
Swing Drive	18 L	4.8 gal	
Final Drive (each)	8 L	2.1 gal	
Hydraulic System (including tank)	373 L	98.5 gal	
Hydraulic Tank (including suction pipe)	161 L	42.5 gal	

DIMENSIONS					
Boom	Reach Boom		Mass Boom		
	6.5 m (21'4")		6.18 m (20'3")		
Stick	Reach Stick		Mass Stick		
	3.2 m (10'6")		2.55 m (8'4")		
Bucket	SD 2.31 m³		SDV 2.78 m³		
	(3.02 yd³)		(3.64 yd³)		
Shipping Height (top of cab)	3180 mm	10'5"	3180 mm	10'5"	
Handrail Height	3180 mm	10'5"	3180 mm	10'5"	
Shipping Length	11 160 mm	36'7"	10 890 mm	35'9"	
Tail Swing Radius	3530 mm	11'7"	3530 mm	11'7"	
Counterweight Clearance	1260 mm	4'2"	1260 mm	4'2"	
Ground Clearance	510 mm	1'8"	510 mm	1'8"	
Track Length	5030 mm	16'6"	5030 mm	16'6"	
Track Length to Center of Rollers	4040 mm	13'3"	4040 mm	13'3"	
Track Gauge	2740 mm	9'0"	2740 mm	9'0"	
Transport Width – 600 mm (24") shoes	3340 mm	10'11"	3340 mm	10'11"	

WORKING RANGES AND FORCES					
Boom	Reach Boom		Mass Boom		
	6.5 m (21'4")		6.18 m (20'3")		
Stick	Reach Stick		Mass Stick		
	3.2 m (10'6")		2.55 m (8'4")		
Bucket	SD 2.31 m³		SDV 2.78 m³		
	(3.02 yd³)		(3.64 yd³)		
Maximum Digging Depth	7480 mm	24'6"	6700 mm	22'0"	
Maximum Reach at Ground Line	11 020 mm	36'2"	10 330 mm	33'11"	
Maximum Cutting Height	10 360 mm	34'0"	10 010 mm	32'10"	
Maximum Loading Height	7120 mm	23'4"	6560 mm	21'6"	
Minimum Loading Height	2620 mm	8'7"	2870 mm	9'5"	
Maximum Depth Cut for 2440 mm (8'0") Level Bottom	7320 mm	24'0"	6540 mm	21'5"	
Maximum Vertical Wall Digging Depth	5550 mm	18'3"	4670 mm	15'4"	
Bucket Digging Force (ISO)	209 kN	46,940 lbf	263 kN	59,210 lbf	
Stick Digging Force (ISO)	165 kN	37,200 lbf	190 kN	42,780 lbf	

STANDARD & OPTIONAL EQUIPMENT

Standard and optional equipment may vary. Consult your Cat dealer for details.

BOOMS, STICKS AND LINKAGES	STANDARD	OPTIONAL
6.18 m (20'3") Mass boom		•
6.5 m (21'4") HD Reach boom		•
2.55 m (8'4") Mass stick		•
2.8 m (9'2") HD Reach stick		•
3.2 m (10'6") HD Reach stick		•
3.9 m (12'10") HD Reach stick		•
TB family bucket linkage with/without lifting eye		•
DB family bucket linkage with/without lifting eye		•

CAT TECHNOLOGY	STANDARD	OPTIONAL
Cat® Product Link™	•	
Remote flash	•	
Remote troubleshoot	•	
Cat Grade connectivity		•
Compatibility with radios and base stations from Trimble, Topcon, and Leica	•	
Capability to install 3D grade systems from Trimble, Topcon, and Leica	•	

(continued)

STANDARD & OPTIONAL EQUIPMENT

Standard and optional equipment may vary. Consult your Cat dealer for details.

CAT TECHNOLOGY (continued)	STANDARD	OPTIONAL
Cat Grade with 2D and offset memory		●
Cat Grade with Advanced 2D		●
Cat Grade with 3D single GNSS		●
Cat Grade with 3D dual GNSS		●
Cat Assist		●
Cat Payload		●
2D E-Fence		●
Auto hammer stop	●	
Laser catcher		●
Work tool recognition		●
Work tool tracking*		●
*Requires PL161 attachment locator.		
ELECTRICAL SYSTEM	STANDARD	OPTIONAL
Maintenance-free 1,000 CCA batteries (x2)	●	
Maintenance-free 1,000 CCA batteries (x4)		●
Centralized electrical disconnect switch	●	
LED exterior chassis and boom lights	●	
ENGINE	STANDARD	OPTIONAL
Oil level sensor		●
Battery-operated engine heater		●
Cold start block heater		●
Three selectable modes: Power, smart, eco	●	
Auto engine speed control	●	
52° C (126° F) high-ambient cooling		●
Hydraulic reverse fan		●
-18° C (0° F) cold start capability	●	
-32° C (-25° F) cold start capability		●
Double element air filter with integrated precleaner	●	
Remote disable	●	
HYDRAULIC SYSTEM	STANDARD	OPTIONAL
Auto heavy lift		●
Auto dig boost		●
Auto hydraulic oil warmup	●	
Bio hydraulic oil capability	●	
Fine swing		●
Reverse swing damping valve	●	
Auto swing parking brake	●	
High performance hydraulic return filter	●	
Two-speed travel	●	
Single one-way circuit		●
Combined two-way circuit		●
SAFETY AND SECURITY	STANDARD	OPTIONAL
Cat Detect - People Detection		●
Cat One Key security system	●	
Lockable external tool/storage box	●	
Lockable door, fuel, and hydraulic tank locks	●	
Lockable fuel drain compartment	●	
Service platform with anti-skid plate and recessed bolts	●	
RH handrail and handhold	●	

SAFETY AND SECURITY (continued)	STANDARD	OPTIONAL
Signaling/warning horn	●	
Ground-level secondary engine shutoff switch	●	
Boom lowering check valve		●
Stick lowering check valve		●
Rearview camera	●	
Inspection lighting		●
SERVICE AND MAINTENANCE	STANDARD	OPTIONAL
Integrated vehicle health management system		●
Scheduled Oil Sampling (S-O-S SM) ports	●	
Grouped engine oil and fuel filters	●	
UNDERCARRIAGE AND STRUCTURES	STANDARD	OPTIONAL
Full-length track guiding guards		●
Segmented two-piece track guiding guards		●
Swivel guard	●	
HD bottom guard	●	
HD travel motor guards	●	
HD rollers		●
Grease lubricated track	●	
HD swing frame	●	
HD swing bearing	●	
7.56 mt (16,700 lb) counterweight	●	
600 mm (24") double grouser, triple grouser, HD triple grouser track shoes		●
700 mm (28") triple grouser track shoes		●
800 mm (31") triple grouser track shoes		●
CAB	ESSENTIAL	DELUXE
High-resolution 203 mm (8") LCD touchscreen monitor	●	●
High-resolution 254 mm (10") LCD touchscreen monitor	○	○
Auto bi-level air conditioner	●	●
Jog dial and shortcut keys for monitor control	X	●
Keyless push-to-start engine control	●	●
Height-adjustable console	X	●
Tilt-up left-side console	X	●
Air-suspension essential seat	●	X
Heated air-suspension deluxe seat	X	●
Monitor integrated Bluetooth radio with USB/Aux ports	X	●
Bluetooth radio with USB/Aux ports	●	X
12V DC outlets	X	●
24V DC outlet	●	X
Beverage holder	●	●
Cup holder	X	●
Openable polycarbonate skylight hatch	X	●
Openable steel hatch	●	X
LED dome light	●	●
Floor welcome light	X	●
Roller front sunscreen	●	●
Roller rear sunscreen	○	●
Beacon ready	X	●
Cat Stick Steer	○	○
Auxiliary relay	○	○

● Standard ○ Optional X Not available

Not all features are available in all regions. Please check with your local Cat dealer for specific offering availability in your area.
For additional information, refer to the Technical Specifications brochures for the 340 model available at www.cat.com or your Cat dealer.

For more complete information on Cat products, dealer services and industry solutions, visit us on the web at www.cat.com.

© 2022 Caterpillar. All Rights Reserved.

Materials and specifications are subject to change without notice. Featured machines in photos may include additional equipment. See your Cat dealer for available options.

CAT, CATERPILLAR, LET'S DO THE WORK, their respective logos, Product Link, S•O•S, "Caterpillar Corporate Yellow," the "Power Edge" and Cat "Modern Hex" trade dress as well as corporate and product identity used herein, are trademarks of Caterpillar and may not be used without permission. VisionLink is a trademark of Caterpillar Inc., registered in the United States and in other countries.

www.cat.com www.caterpillar.com



AEXQ3447-01
Replaces AEXQ3447-00
Build Number: 08B
(Afr-ME, Eurasia,
Indonesia, S Am, SE Asia)

